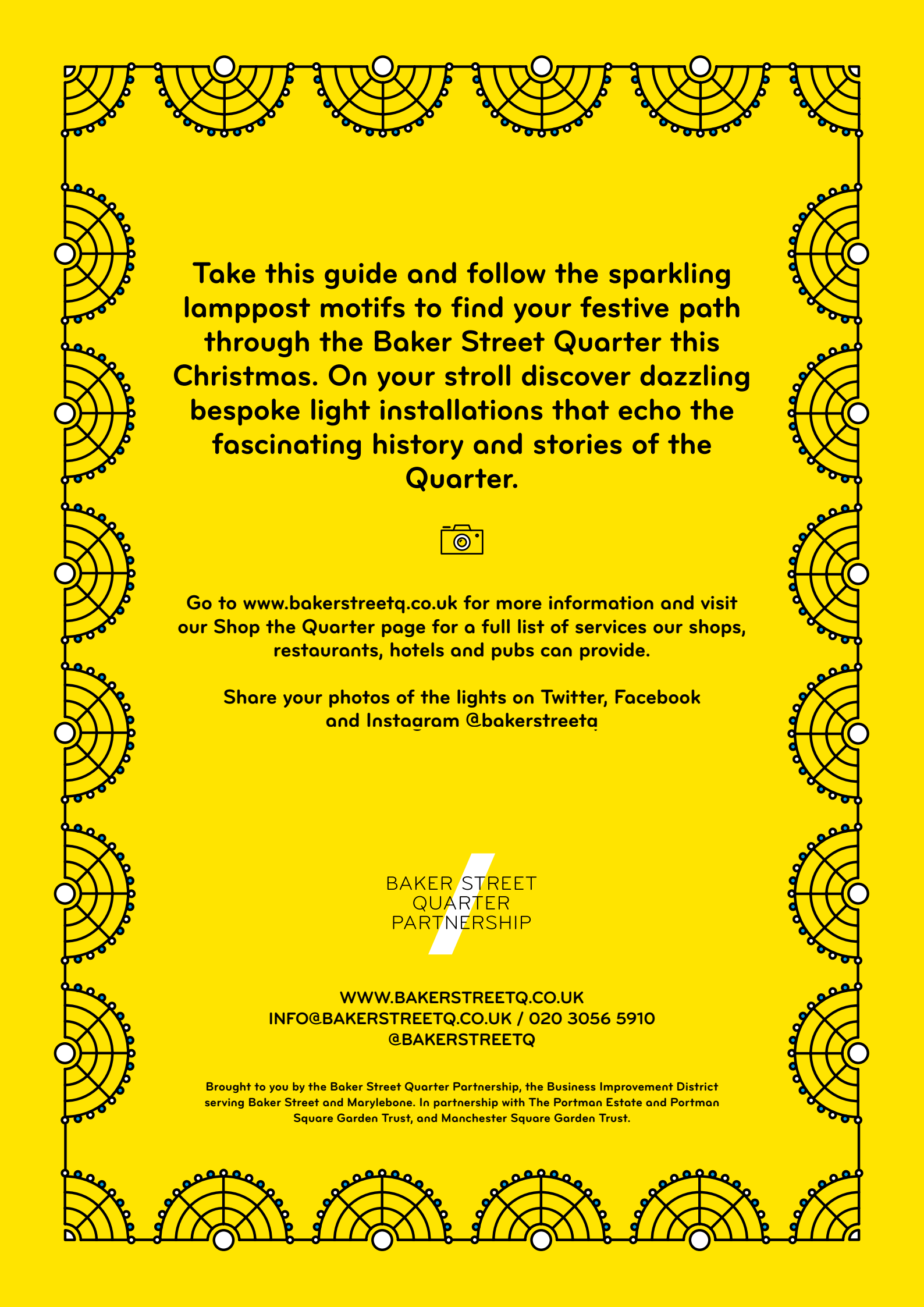


BAKER STREET QUARTER

CHRISTMAS LIGHTS

UNTIL 5 JANUARY 2021
DISCOVERY GUIDE





Take this guide and follow the sparkling lamppost motifs to find your festive path through the Baker Street Quarter this Christmas. On your stroll discover dazzling bespoke light installations that echo the fascinating history and stories of the Quarter.



Go to www.bakerstreetq.co.uk for more information and visit our Shop the Quarter page for a full list of services our shops, restaurants, hotels and pubs can provide.

Share your photos of the lights on Twitter, Facebook and Instagram @bakerstreetq

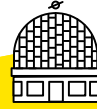
BAKER STREET
QUARTER
PARTNERSHIP

WWW.BAKERSTREETQ.CO.UK
INFO@BAKERSTREETQ.CO.UK / 020 3056 5910
[@BAKERSTREETQ](https://www.instagram.com/bakerstreetq)

Brought to you by the Baker Street Quarter Partnership, the Business Improvement District serving Baker Street and Marylebone. In partnership with The Portman Estate and Portman Square Garden Trust, and Manchester Square Garden Trust.



BAKER STREET



MARYLEBONE ROAD

MARYLEBONE ROAD

1



GLoucester Pl.

BICKENHALL ST.

PORTER ST.

CRAWFORD ST.

BAKER STREET

CHILTERN STREET

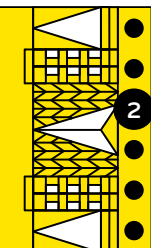
BAKER STREET LAMPPOSTS

Follow the path of the lamppost lights with design inspired by the old air ducts and patterns that can be found in Baker Street Station. The pattern evokes art deco and early modernism which has been given a contemporary twist with the choice of bright standout colours.

DORSET ST.

GLoucester Pl.

RODMARTON ST.



2



MANCHESTER ST.

BLANDFORD ST.

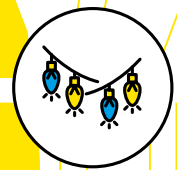
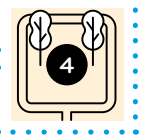
BLANDFORD ST.

GEORGE ST.

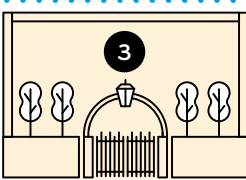
BAKER STREET

UPPER BERKELEY ST.

FITZHARDINGE ST.



NEW QUEBEC ST.



SEYMOUR ST.

WIGMORE ST.



PORTMAN ST.

ORCHARD ST.

DUKE ST.

JAMES ST.

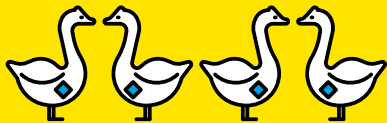
OXFORD ST.

**Set off from Baker Street station or
any point along the route on the map
to explore the lights**

1

Baker Street / Marylebone Road junction

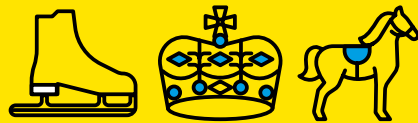
Inspired by the Sherlock Holmes story, *The Adventure of the Blue Carbuncle*, the ornate lamppost columns marking the gateway to the Quarter feature illuminated geese sporting blue jewels (carbuncles).



2

55 Baker Street

As you approach this destination, look up into the trees to spot the bright yellow eccentric items that would have been for sale at the amazing and exotic Baker Street Bazaar. The fabulously popular bazaar was a huge draw in the 1800s - 1900s and the original home of the Madame Tussauds exhibition.



3

Portman Square Garden

The shimmer of the blue and gold from the decorations in this garden are a subtle nod to Lady Montagu's 'Blue Stocking Parties' which were held in Montagu House (currently under development as Nobu Hotel) on Portman Square for eminent intellectuals.



4

Manchester Square Garden

Once the home of Marylebone Pleasure Gardens, the trees gleam with thousands of warm lights to reflect how the garden would be have been lit by candles and lanterns in the 1700s.

